



MONTHLY MEMBERSHIP PROGRESS REPORT

District 26 M4

Results as of: 2/17/2014 11:17:44AM

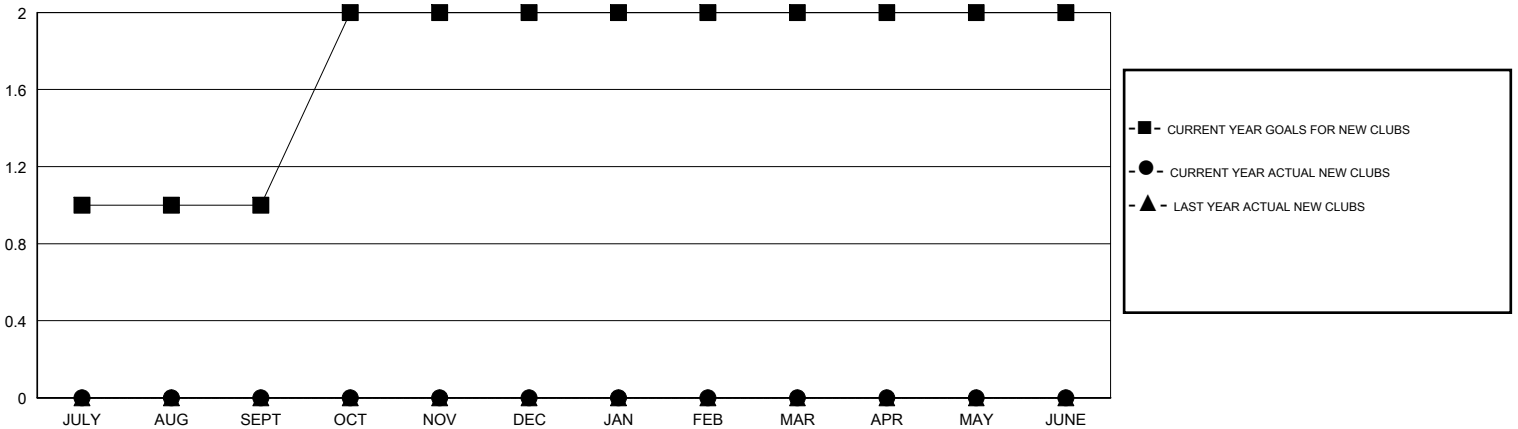
GMT: HAL GRIFFIN

LOCATION MISSOURI

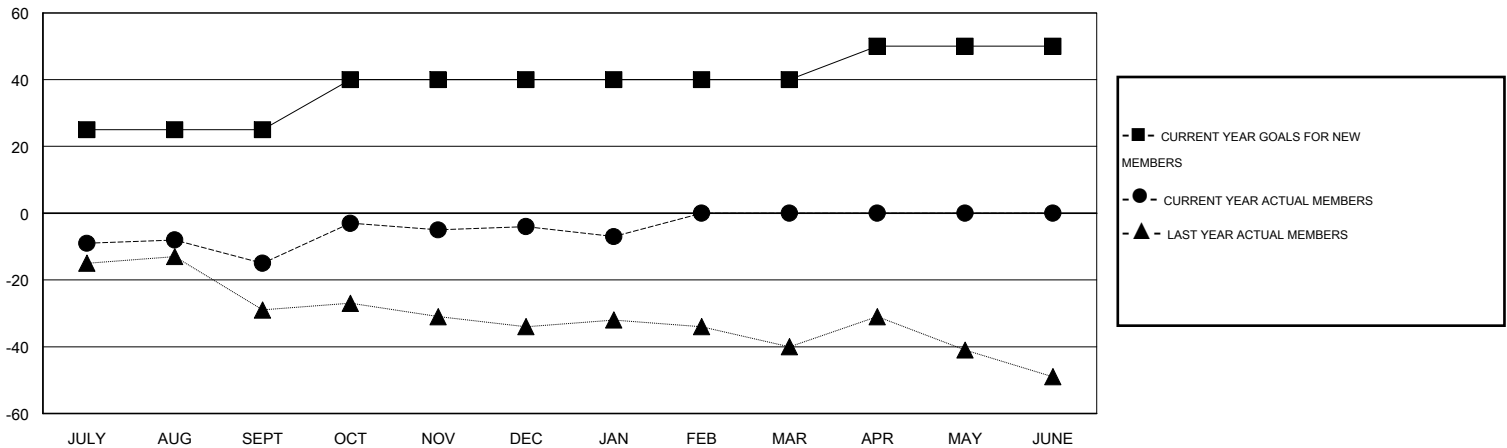
GMT CA 1

| Clubs | | | | | Members | | | | |
|-----------------------|---------------|------------------|----------------------|----------------------|-----------------------|-----------------|--------------------|------------------------|----------------------|
| RESULTS FOR 2013-2014 | | | | | RESULTS FOR 2013-2014 | | | | |
| QUARTER | NEW CLUB GOAL | ACTUAL NEW CLUBS | ACTUAL DROPPED CLUBS | ACTUAL NET GAIN/LOSS | QUARTER | NEW MEMBER GOAL | ACTUAL NEW MEMBERS | ACTUAL DROPPED MEMBERS | ACTUAL NET GAIN/LOSS |
| JULY/AUG/SEPT | 1 | 0 | 0 | 0 | JULY/AUG/SEPT | 25 | 22 | 37 | -15 |
| OCT/NOV/DEC | 1 | 0 | 0 | 0 | OCT/NOV/DEC | 15 | 32 | 21 | 11 |
| JAN/FEB/MAR | 0 | 0 | 0 | 0 | JAN/FEB/MAR | 0 | 13 | 16 | -3 |
| APR/MAY/JUNE | 0 | 0 | 0 | 0 | APR/MAY/JUNE | 10 | 0 | 0 | 0 |

GOALS AND ACTUAL NEW CLUBS CUMULATIVE



GOALS AND ACTUAL MEMBERS CUMULATIVE



| | | | |
|------------------------|--|---|----------------|
| DROPPED CLUBS: 0 | 28 CLUBS OF 62 ADDED 1 OR MORE NEW MEMBERS | <u>GENDER DISTRIBUTION</u> | |
| <u>DROPPED MEMBERS</u> | | MALE | 1,093 (78.52%) |
| DECEASED | 14 | FEMALE | 299 (21.48%) |
| CLUB CANCELLED | 0 | CLICK HERE FOR HEALTH ASSESSMENT DATA | |
| OTHER | 60 | FAMILY UNIT MEMBERS | 256 |
| TOTAL | 74 | HEAD OF HOUSEHOLD | 125 |
| | | NON-HEAD OF HOUSEHOLD | 131 |